



Cyber Security  
Centre for the  
Isle of Man



Department of Home Affairs

---

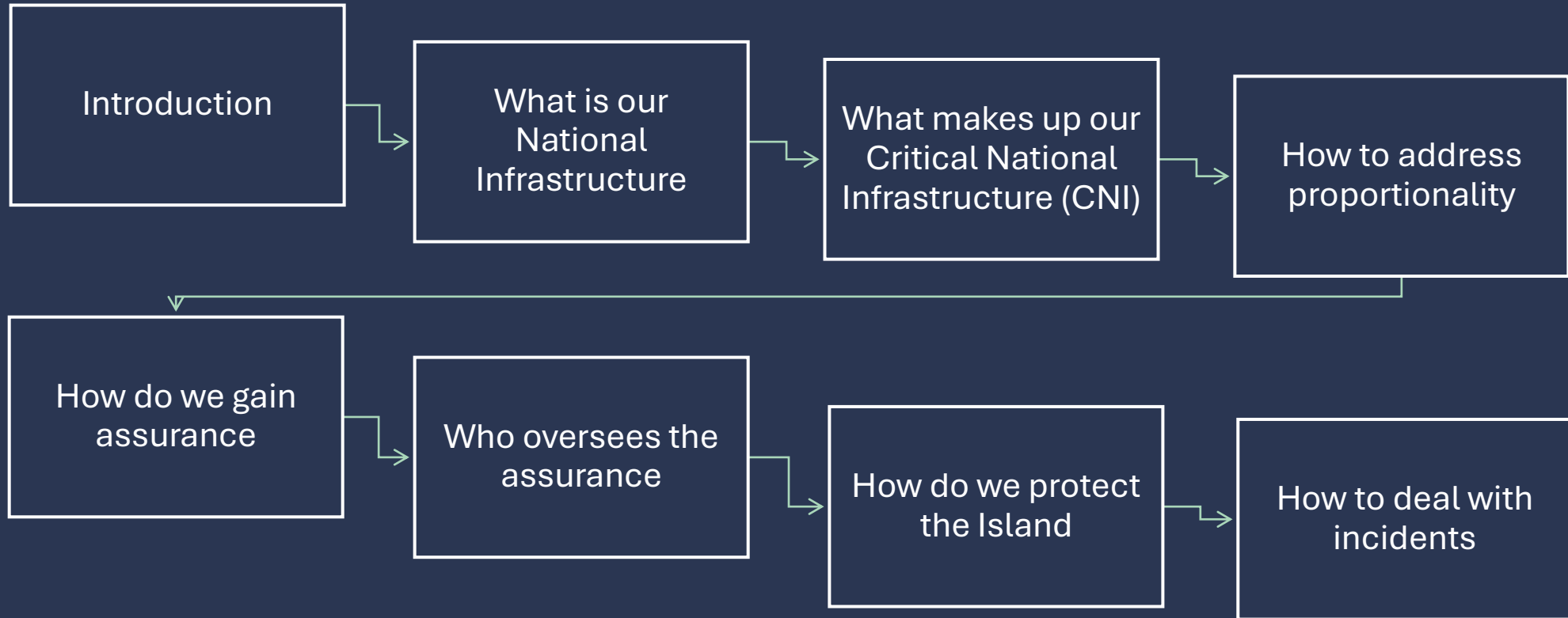
*Rheynn Cooishyn Sthie*

# Proposed National Infrastructure Security Bill (NISB)

Guide

# What we will cover

---

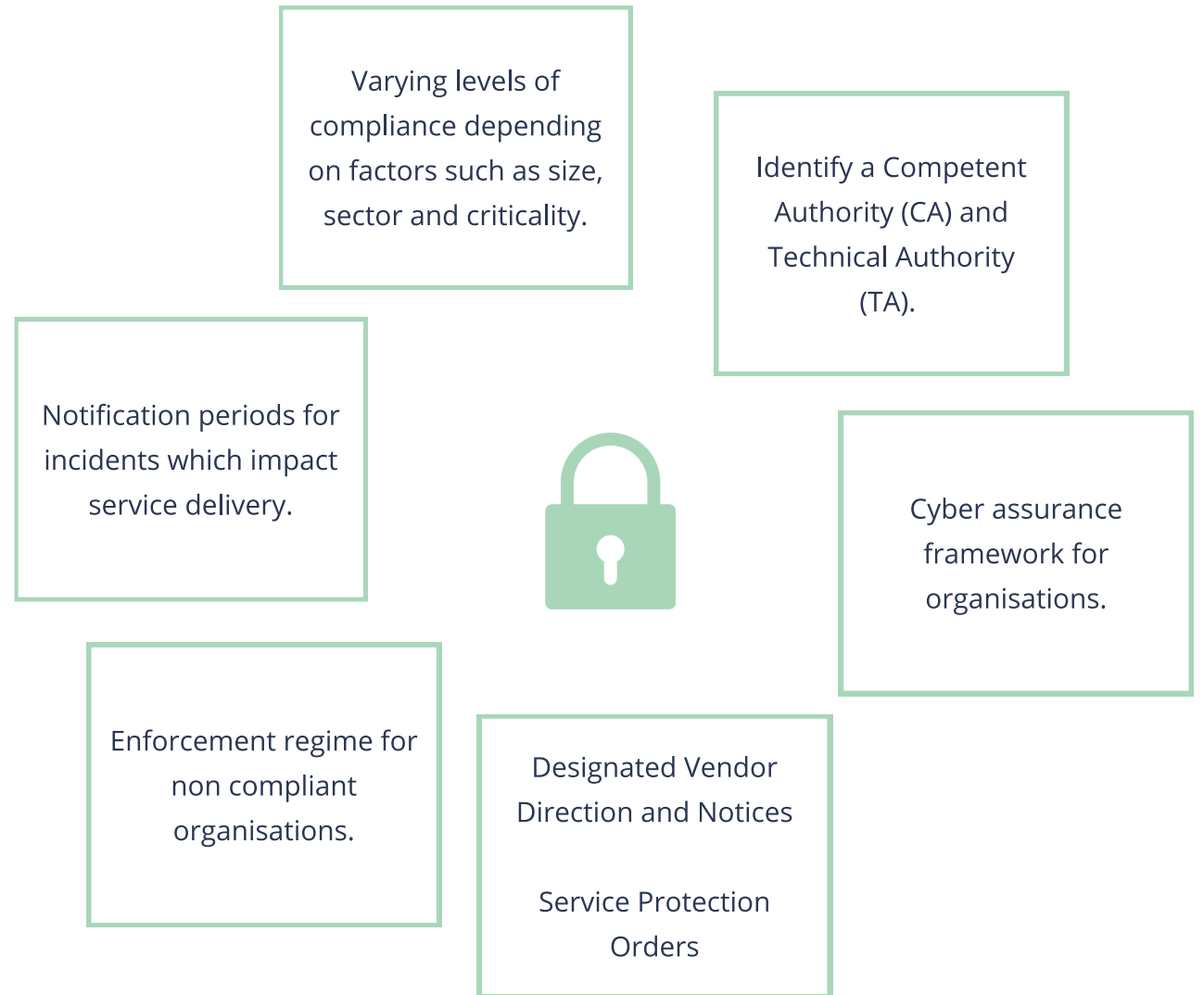


# Introduction

---

The Department of Home Affairs wishes to introduce a National Infrastructure Security Bill to raise levels of cyber security and resilience for core services on the Isle of Man.

The diagram (right) illustrates some of the core elements of the proposed legislation.

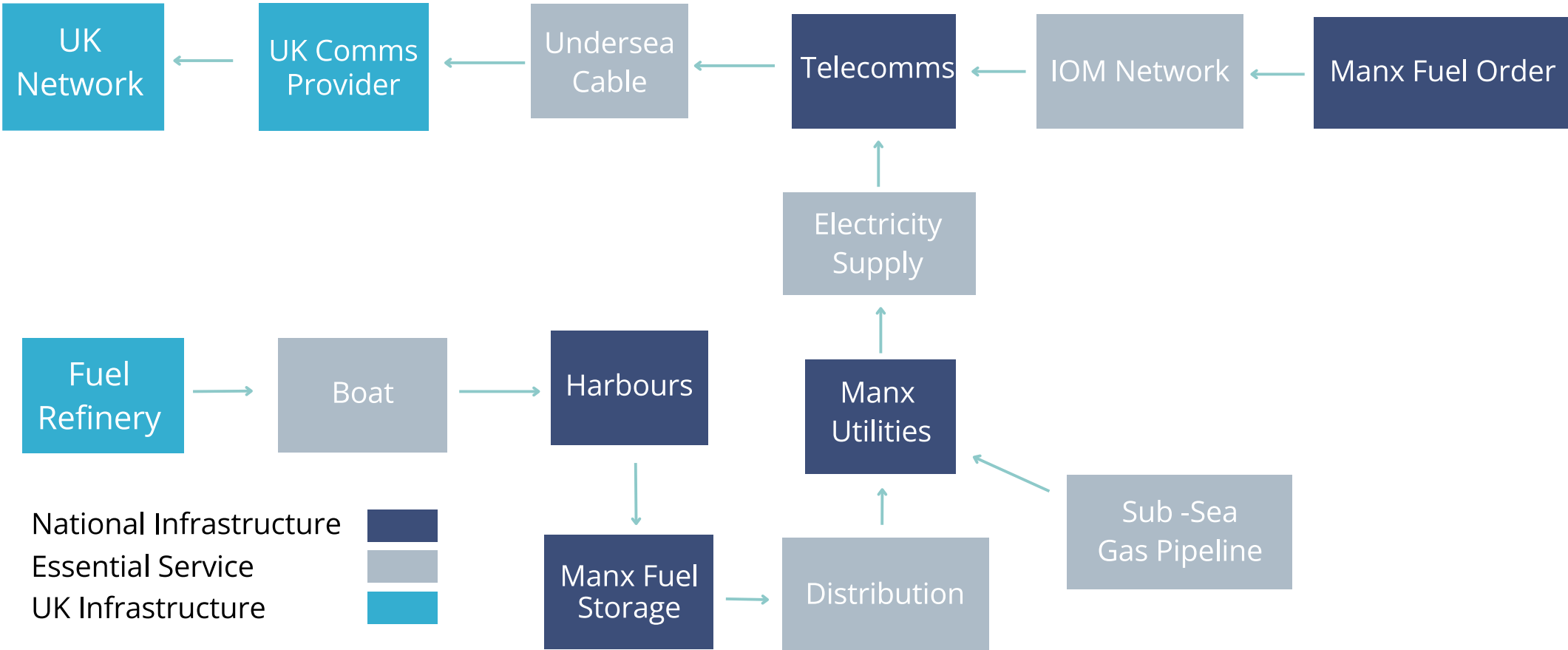




What is the National Infrastructure of the Isle of Man?

---

# The Inter-Dependencies Across CNI



# How can we ensure it is proportionate?

---

Essential Entities

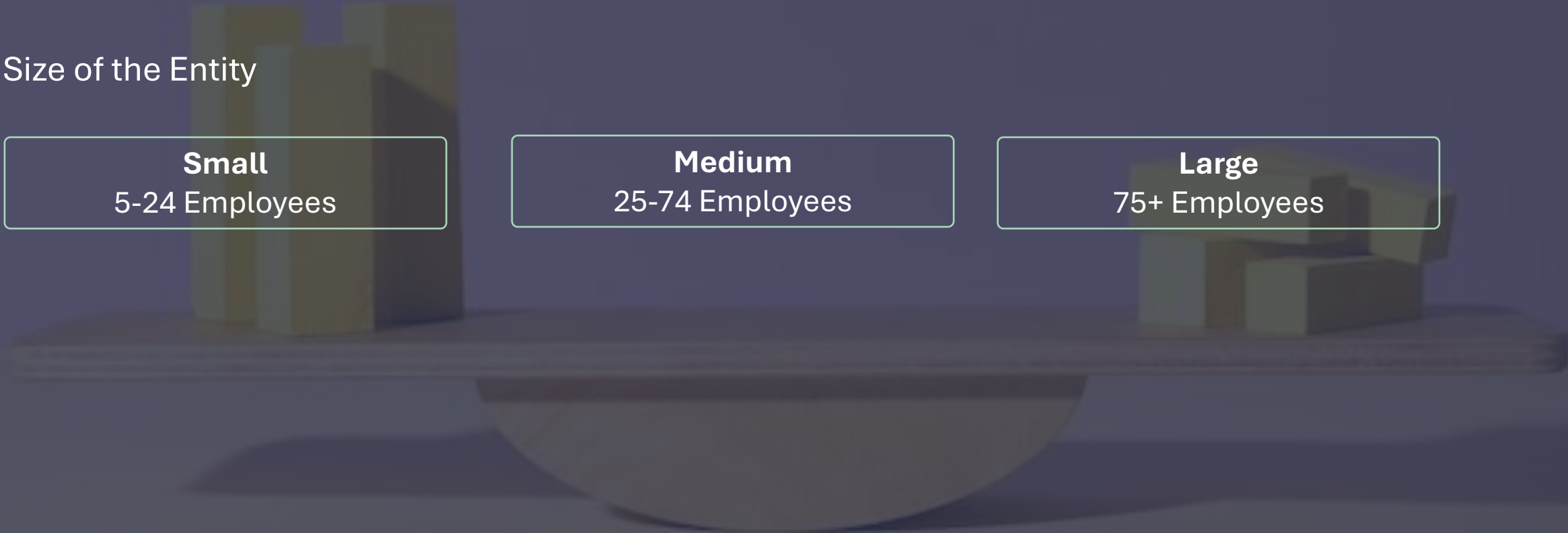
Important Entities

Size of the Entity

**Small**  
5-24 Employees

**Medium**  
25-74 Employees

**Large**  
75+ Employees



# Sectors of High Criticality

---



# Other Critical Sectors

\*It is proposed that the legislation will cater for changes to the sectors by allowing for adjustments



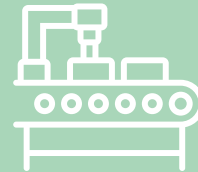
Food



Waste Management



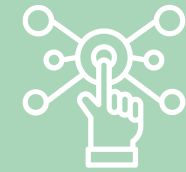
Research



Manufacturing



Postal and Courier Services



Digital Providers



Chemicals



Entities providing Domain name registration services



# Essential and Important Entities

---

The designation of 'Essential' and 'Important' will determine the assurance framework an entity will follow. Entities may be designated as 'Essential' or 'Important' depending on factors such as size, sector and criticality.



# Assurance Framework

---

Depending on an entities designation they will be required to work to a framework to assure the Competent Authority that it is resilient and secure.

# Assurance Requirements

## Essential Entities

Annual Self-Certification

Business Continuity Plans (BCP)

BCP Annual Testing

Continuous Improvement Regime

Identify Core Service delivery roles and minimum staffing levels

Independent certification every 3<sup>rd</sup> year

Registration of particulars

Immediate notification of change of circumstances

On-site & off-site supervision (incl audits)

Information Requests

Event Notification Regime

## Important Entities

Triennial Self-Certification

Business Continuity Plans (BCP)

BCP Testing

Identify minimum staffing levels

Independent certification post-event when required

Registration of particulars

Annual verification of particulars

Post-event supervision (incl audits)

Information Requests

Event Notification Regime

# Assurance Oversight

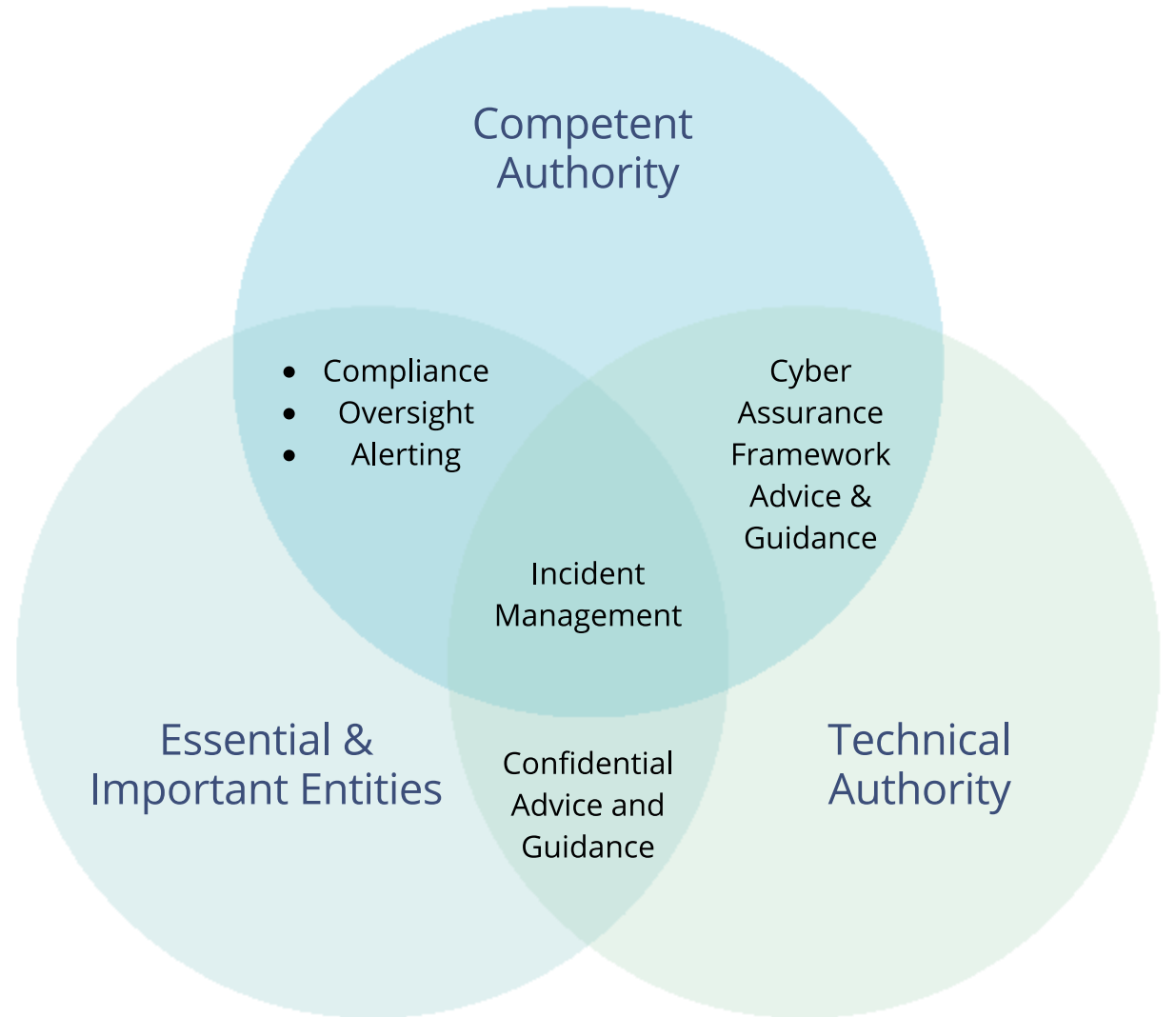


The NISB will require the designation or establishment of a Competent Authority whose purpose will be to ensure the appropriate level of assurance is maintained.

The Competent Authority will be supported by a Technical Authority.

# The Resilience Triad

---



# Protecting our CNI

---

Designated Vendor  
**Notices**

Designated Vendor  
**Directions**

Service Protection  
Orders

# Incident Notification

---



## Early Notification

When an entity **suspects** a potential threat that **may** impact services or National Infrastructure, they must promptly notify the competent authority with relevant details.



## Report

When a risk or event **affects** or is **going to affect** service delivery or National Infrastructure, they must promptly notify the competent authority with relevant details, including any additional information within 24 hours.



## Interim Report

to be provided within 72 hours of an event or as required by the competent authority together with as much relevant information as might be required or requested by the competent authority.



## Update Report

where new or relevant information becomes available or is reasonably requested by the competent authority.



## Final Report

to be submitted within 1 month of event closure

Questions?

---